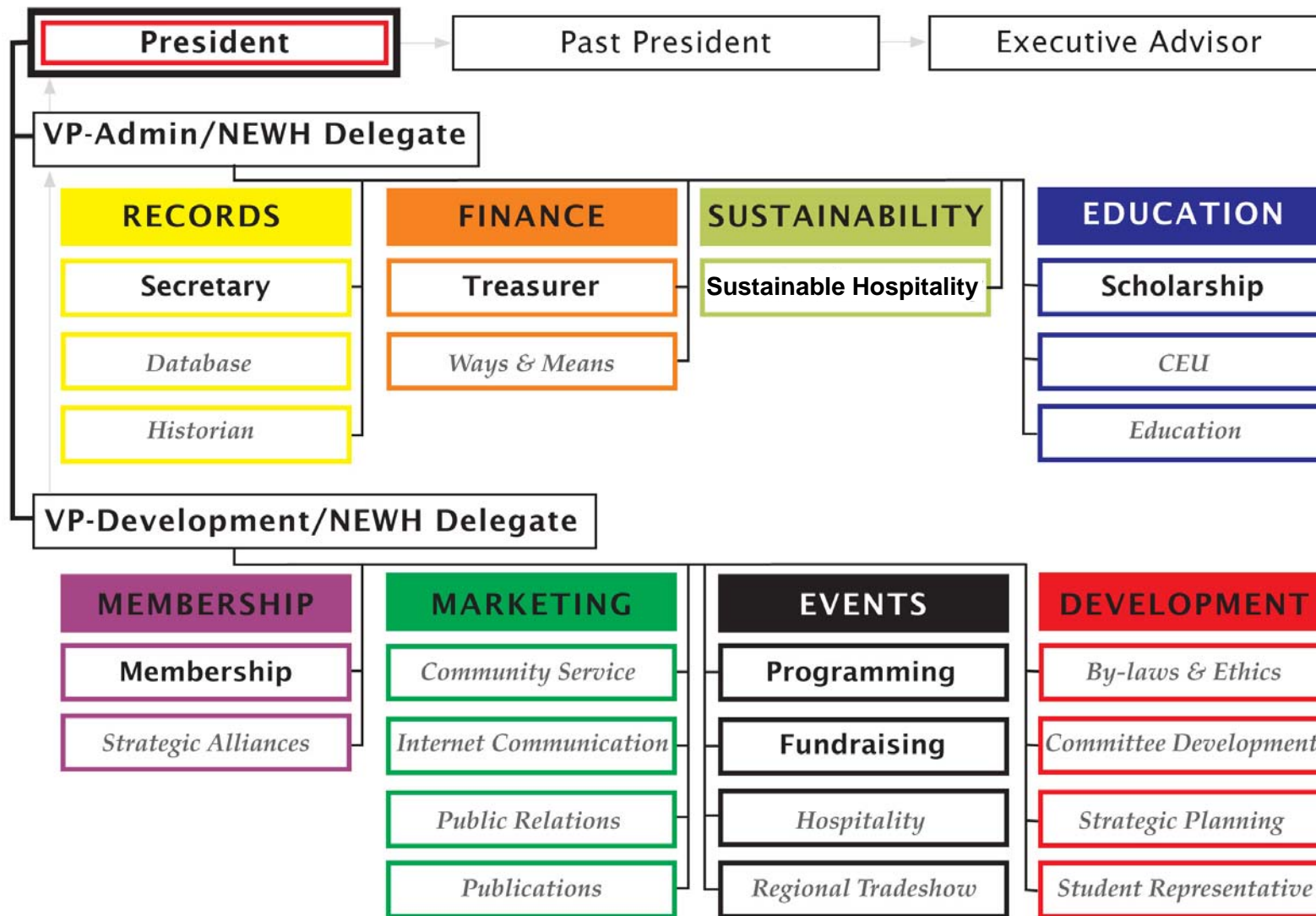


**NEWH, Inc. Chapter Board of Directors
Organizational Chart**



Board Positions

- **Executive Committee:**
(1 vote each, unless indicated)
 - President* (no vote, unless tie)
 - VP-Administration/
NEWH Delegate*
 - VP-Development/
NEWH Delegate *
 - Secretary
 - Treasurer
 - Past President*
 - Executive Advisor* (no vote)

*Automatic Positions are part of succession planning and begin at the VP/Development position, which is elected. After one year in the position, the person will move to the next level. This ensures knowledge and stability for the chapter and follows the NEWH, Inc. Board Model. All other positions are one-year positions, with a 2-year maximum per position.

- **Directors** (1 vote each):
 - Scholarship
 - Membership
 - Programming
 - Fundraising
 - Sustainability
- **Chairs** (no vote)
 - Public Relations
 - Publications
 - Hospitality
 - Community Service
 - Internet Communication
 - Historian
 - Student Rep

Quorum = 50% of voting members+ 1

Email Vote: Can be done, but you must have 100% participation/reply and the vote must be unanimous